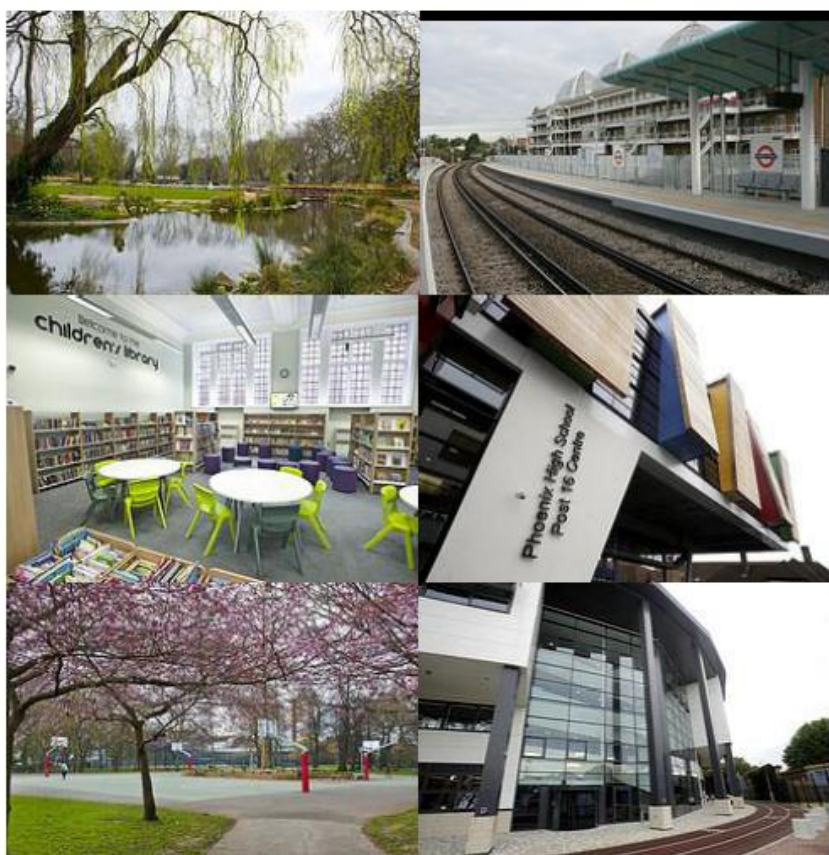


Community Infrastructure Levy (CIL) Charging Schedule



Introduction

The London Borough of Hammersmith & Fulham ('the Council') is a charging authority for the purposes of Part 11 of the Planning Act 2008 and may therefore charge a Community Infrastructure Levy(CIL) on development carried on in the area within which it exercises planning powers. The Council will not charge CIL for development carried on within the boundaries of the Old Oak and Park Royal Development Corporation, part of which lies within the north of the borough as from 1 April 2015 it will no longer be the local planning authority for this area.

The documentation can be viewed at www.lbhf.gov.uk/cil.

Charge rates

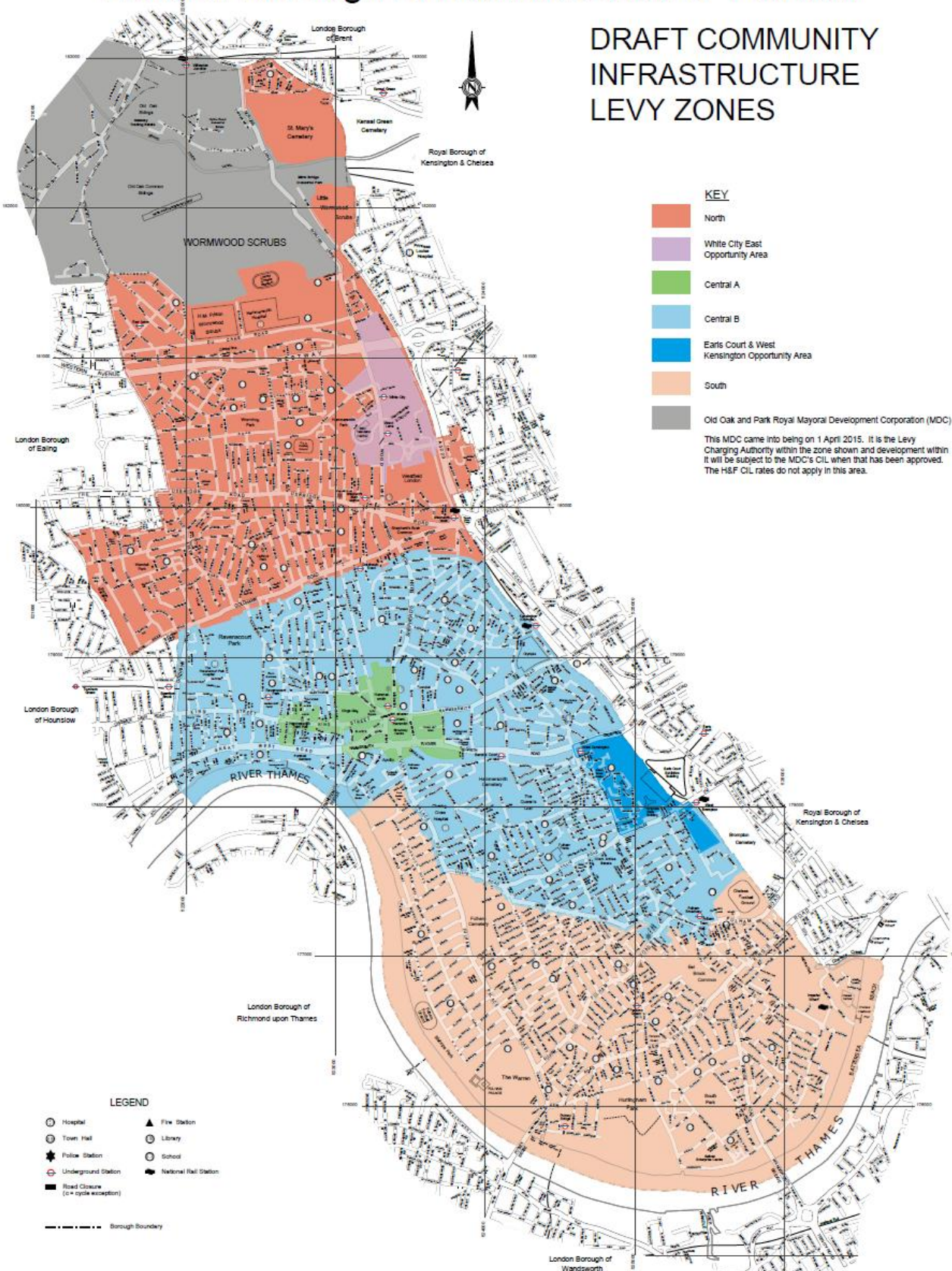
Charging zones	Uses			All other uses	
	Residential (C3)	Office (B1a/b)	Student accommodation		
Charging zones	HMO (C4)		A class uses (including retail clubs)		
			Health and fitness leisure centres		
			Hostels		
			Night clubs		
			Laundrettes		
			Taxi businesses		
			Amusement centres & Casinos		
North	£100/m ²	Nil	£80/m ²	Nil	
Central A†	£200/m ²	£80/m ²			
Central B		Nil			
South	£400/m ²				
White City East‡	Nil				
Earls Court & West Kensington Opportunity Area‡	Nil				

† The Central A Charging Zone boundary is the same as the Hammersmith Town Centre boundary on the council's adopted Proposals Map.

‡ It should be noted that, whilst a £0/m² (nil) rate is proposed at White City East and Earls Court & West Kensington Opportunity Area, this does not mean that the council will not receive significant financial contributions from developments in these areas as S106s will continue to be used.

London Borough of Hammersmith & Fulham

DRAFT COMMUNITY INFRASTRUCTURE LEVY ZONES



KEY

- North
- White City East Opportunity Area
- Central A
- Central B
- Earls Court & West Kensington Opportunity Area
- South
- Old Oak and Park Royal Mayoral Development Corporation (MDC)

This MDC came into being on 1 April 2015. It is the Levy Charging Authority within the zone shown and development within it will be subject to the MDC's CIL when that has been approved. The H&F CIL rates do not apply in this area.

LEGEND

- Hospital
- Fire Station
- Town Hall
- Library
- Police Station
- School
- Underground Station
- National Rail Station
- Road Closure (i.e. cycle exception)
- Borough Boundary

Details are subject to the Local Planning Authority's CIL Charging Schedule. This drawing is for information only. © Crown copyright and database right. 2015 Ordnance Survey. Licence No. 100019222



NOT TO SCALE
Drawing No. 71605/14/8
March 2015

Charging authority

The charging authority is the London Borough of Hammersmith & Fulham.

Date of approval

The Charging Schedule was approved by the council on XXX .

Date of effect

The Charging Schedule will become effective on XX.

Calculation of CIL charge & indexation

The 'Chargeable Amount', including indexation to take into account inflation, will be calculated in accordance with Part 5 of the Community Infrastructure Levy Regulations 2010 (as amended).

Statutory compliance

The Charging Schedule has been issued, approved and published in accordance with the CIL Regulations 2010 (as amended), Part 11 of the Planning Act 2008 (as amended) and Part 6 of the Localism Act 2011 (as amended).